

## ADOBE PHOTOSHOP

**Scan Photos**

**Image Type:** Black and White Photo or Grayscale

**Resolution:** 800

**Size:** To achieve the best quality halftone, scan the photo to the final size. **Example:** if the original photo is 3" x 5" and the final size is 5" x 7", scan photo at 165 percent. (To find the exact percentage, a proportional wheel is recommended. You can purchase them at a craft store.)

**Sharpness:** Sharpen image if needed. Go to "EFFECTS/SHARPEN."

**Convert Color Photo to Grayscale**

Click "IMAGE", select "MODE", and then click on "GRAYSCALE"

**Open an Existing File**

Open Adobe Photoshop

Click "FILE", and then select "OPEN". Navigate to where your file is, select the file, and click "OPEN"

Click "IMAGE", select "MODE", and then click on "GRAYSCALE"

Click "IMAGE"

Click "IMAGE SIZE", then change the image to final size

Click "OKAY"

**Adjust Image Contrast**

Click "IMAGE", select "ADJUSTMENTS", and then click on "CURVES" The box in Figure A and Figure B will appear.

Click on the lower left box. In the "OUTPUT" field enter 25 (see Figure A)

Click on the upper right box. In the "OUTPUT" field enter 85 (see Figure B)

Click "OKAY"

**Start the Halftone Procedure**

Click "IMAGE", select "MODE", and then click on "BITMAP"

Select 800 dpi Output Resolution

Choose "HALFTONE SCREEN" as the output method

Click "OK"

Set frequency within a range of 35 to 55 LINES/INCH. **Note:** the smaller the number the larger the dot size. 35 is a good size for larger projects that will be viewed from a distance. 45 to 55 is a good size for objects that will be viewed close up.

Select angle of 37.5 DEGREES. Sometimes strange patterns will appear in the halftone dots. If this happens, change the angle setting.

Click "OK"

**Invert Photo**

*This step is necessary for washout-style films.*

Click "IMAGE", select "ADJUSTMENTS", and then click on "INVERT"

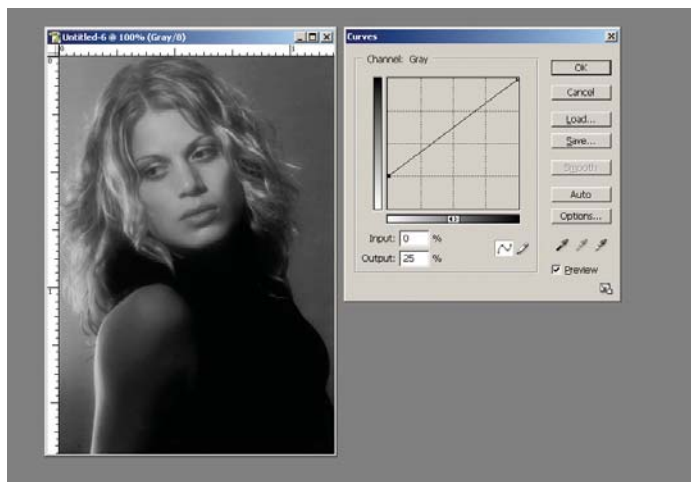


Figure A

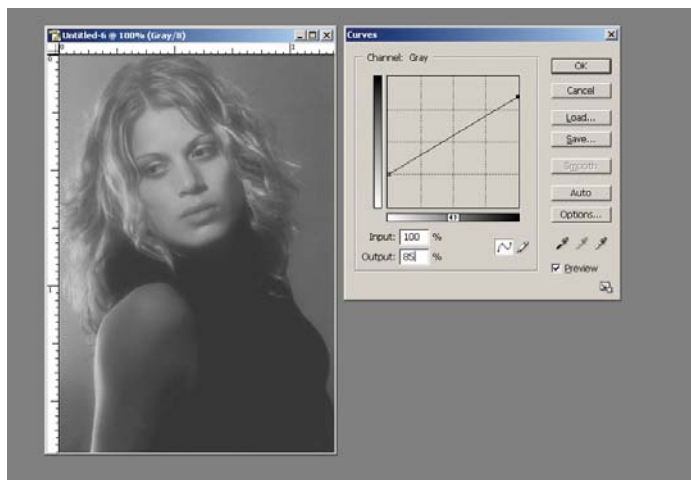


Figure B

**REMEMBER:** Exposure for halftones will work best on a vacuum frame unit. Washout is best achieved with a pressure washer. Although success is possible with some films, Letralites and low-pressure washers are not normally recommended for halftone production. However, letralites are acceptable for use with non-washout films.